

A vibrant collage of agricultural and floral images arranged in a diamond pattern. The images include various flowers like sunflowers, purple thistles, pink clover, and yellow rapeseed, as well as farm scenes with cows, horses, and a tractor. The text 'CHURCH of BURES' is at the top in white and green, 'Seed specialists since 1902' is below it in white, and '2023' is in the center in large white font.



# WELCOME TO OUR 2023 CATALOGUE



We are looking forward to seeing you all on our stand at the Essex Young Farmers Show on Sunday 21st May at Boyton Hall.



Robert 'Ted' Edginton, collecting his long service award from David Barker at the Suffolk Show. Ted retired after 34 years service with us where he was always meticulous with everything that he undertook; from seed cleaning to roguing to painting.

Welcome to our 2023 catalogue, which we hope you will find of interest.

We work closely with all our growers to produce high quality UK seed crops. We also welcome any new growers who are looking for new opportunities to grow combinable and niche crops that we continue sell predominantly within the UK while also exporting worldwide.

2022 was a challenge, due to the drought and extended high temperatures meant that yields were affected and were down on previous harvests. However, we are looking forward to a much better season this year.

Since W A Church was founded by William Arthur in 1902, we have built a reputation on offering a quality service and products to match. We continue to run as a 4th generation family business and pride ourselves on maintaining this same reputation.

Over the last few months we have been working hard behind the scenes on a refresh of the brand and logo, along with a new website which we hope you will see not only represents our long history and traditions within the industry, but also, sets us up for the future.

Finally, not only would I like to thank all the staff for their hardwork once again during the past year, but also thank you, our customers, farmers and suppliers for your continued support. We are here for all your needs this forthcoming season and beyond, so please do not hesitate to contact us.

A handwritten signature in white ink, which appears to read 'Robert Church', is written over a dark, textured background.



# THE TEAM



**Robert Church**  
Managing Director

Vining peas, herbs & spices, contract cleaning,  
contract procurement and placing contracts.

Email: [Robert@churchofbures.co.uk](mailto:Robert@churchofbures.co.uk)  
Mobile: 07767 756774



**Harry Carter**  
Sales & Operations Manager  
Agricultural, Amenity & Farm Sales and  
placing contracts.

Email: [Harry@churchofbures.co.uk](mailto:Harry@churchofbures.co.uk)  
Mobile: 07384 540925



**Geoff Lakin**  
Horticultural Sales Manager  
Vegetable seed & export sales.

Email: [g\\_lakin@sky.com](mailto:g_lakin@sky.com)  
01205 366068 • 07887 693554



**Ben Turpin**  
Warehouse & Production Manager  
Site Manager - High Fen Seed Store

Email: [Ben@churchofbures.co.uk](mailto:Ben@churchofbures.co.uk)  
Mobile: 07981 860780



**Karen Alexander**  
Accounts Manager



**Sheryl Buck**  
Office & Seed  
Administration



**Julia Simpson**  
Seed Laboratory  
Analyst



# SEED GROWING CONTRACTS

Church of Bures is well known for being able to offer growing contracts to farmers which are typically not available anywhere else in the market. We pride ourselves on being able to offer niche and bespoke crops that add value to the grower and we are able to offer help and guidance all the way through the growing season.

The vast majority of the crops are 'seed contracts' which involve crop inspections from one of us who are licensed ministry seed inspectors. This is an inspection process that we have to undertake on behalf of APHA to ensure we are growing pure seed for our customers. All of the seed crops are cleaned and processed at our seed plant at High Fen which has 5 separate cleaning lines which are specifically designed to deal with the specialist crops we handle. The advantage to the grower that we handle all these crops in house is huge as we are not reliant on any third parties which can slow things up and sometimes bring them to a complete stop!

We grow and handle in excess of 20 varieties of peas which include Minerva and Swift Maples, Maro marrowfats as well as picking and vining peas. Church of Bures is the UK agent for Pure Line Seeds Inc. who are USA plant breeders and have been producing world class vining pea varieties for many years. Growers contracts are available for all of these and they can be a very lucrative break crop.

We also have growers contracts available for Clovers and other small seeds including Forage Rape, Mustard, Kale, Vetches (Tares), Cress, Fodder Beet, Mangel, Turnip, and Stubble Turnips. We have contracts for Maris Bead Tic Beans which is the 'Holy Grail' of the pigeon trade and Church of Bures own and maintain the variety. We also need Broad Beans grown for seed which typically go in to the packet trade.

Church of Bures is synonymous with providing the highest quality seed and we can only do this with the expertise of our farmer customers. Talk to us and see what we can offer you that is profitable, maybe a bit different, and with someone who has the expertise and works for a family company that has been independent for over 120 years.



Maro, marrowfat growing contracts are always needed, a traditional variety with phenomenal demand.

As well as growing for seed we are always wanting commercial crops grown of this niche high quality variety. In spite of its longevity the demand into Japan is many times more than we can supply. Our customers like a good even green colour and it doesn't necessarily mean they have to be 'bottle green'. The variety ticks the right boxes for all aspects with skin appearance, good cooking and soaking quality and most of all, the taste. To achieve a greener colour it is best to harvest them slightly earlier and blow them down in moisture which will preserve the colour.

Several crops have been swathed over the last couple of years which worked really well and equally it preserves the colour. This is usual practice in the USA and we will no doubt see more of it here. In a good growing season they will yield well, the peas and pods are large. They are also an excellent entry for Wheat.





# PEAS

## PICKING PEAS

**Ambassador** - A maincrop variety with dark green, blunt ended pods. Heavy yielder. Height 75cm.

**Early Onward** - This variety is similar in characteristics to Onward, although the pods and foliage are a darker green. Matures 7-10 days earlier than Onward. Height 50cm.

**Greenshaft** - Good yielding maincrop variety with long, curved pointed pods. Height 70cm.

**Kelvedon Wonder** - First early with dark green medium-sized pods. Popular variety which is robust and ideal for market growers. Height 45cm.

**Onward** - One of the most popular varieties in use today. It boasts a robust habit and produces a heavy crop year after year. Ideal for market growers. Height 60cm.

**Oregon Sugar Pod** - Edible podded variety with tender pods which should be eaten when young. Height 1.1m.

## MAPLE PEAS

**Minerva** - This is a Church of Bures variety. It is a purple flowered brown skinned pea which produces high yields, is early to mature with seed of good shape and colour. It is still the preferred variety for feeding to pigeons which makes it a valuable commodity. It is also ideal in various green forage and silage mixtures and the brown seeded peas can be sold into the feed market for grinding and inclusion into animal feed. Its popularity has increased steadily over recent years due to its value to organic farmers as green manure or as a deep-rooting full-foliage legume.

**Swift** - This semi-leafless maple pea yields higher and is easier to harvest than existing varieties. Swift is an established variety for the pigeon trade.



## VINING PEAS

**Avola** - A proven early variety used both in the fresh market and for freezing. Large seeded full foliage, first early.

**Banff** - Excellent double podding, early variety combining good yield and quality with excellent pea to vine ratio. Thrives on lighter soils.

**Legacy** - A high yielding, triple pod, full foliage variety that has good powdery mildew resistance. Early maincrop.

**Preference** - A semi-leafless early maincrop variety with good field resistance and root rot tolerance. A good yielder.

**Reflection** - Late season variety which can also be used for the fresh picking market. 9-11 peas per pod. Strong tolerance to downy mildew.

**Serge** - A maincrop variety. Exceptional yields and quality. Produces consistent uniform sample. Double pointed pods with 10-11 seeds per pod.

**Style** - A very high yielding semi-leafless variety that produces 10-11 peas per pod. It stands well and the quality and colour are both good. Style has yielded over seven tonnes per hectare for canning. Prefers heavier, highly fertile soil.

## SEED TREATMENTS

**Start Up Maxx** - This treatment is to promote early root development. Consisting of a combination of soluble nutrients and bio-active compounds.

**Desiccation of Seed Crop** - With the withdrawal of Diquat, we must urge everyone who has a seed contract with us NOT to use any chemical containing Glyphosate to desiccate the crop, as this will severely effect the germination and render it 'not fit for seed sales'.



# CLOVERS

## RED CLOVER

Red Clover normally produces two main cuts and a small autumn cut. Most early varieties are traditionally known as Broad Red or Double Cut Clover. It is a useful component in the short-term grass mixtures for silage, haylage etc.

**Essex Broad** - Church of Bures are the maintainers of Essex Broad and still grow the variety in Essex. It is a 100% UK native variety in which we have specialised for a number of years. Produces heavy yielding hay and seed crops. It also provides a rich quality growth and leaves excellent soil fertility.



## WHITE CLOVER

White Clover is a low growing, high tillering plant which is a very important constituent of our long term leys. In our mixtures, we blend two varieties, this enables maximum benefit in terms of flexibility to most multi-purpose leys.

**Church White Clover** - A blend consisting of medium and large leaved white clover, which will help bulk the grass for cutting and grazing with excellent mid summer production without artificial fertiliser.



## CRIMSON CLOVER

Crimson Clover is a good choice for smothering weeds, fixing nitrogen and is a fast growing, bulky green manure. It has deep roots that penetrate the soil, a mass of foliage and when ploughed in helps to improve the soil structure. It will also produce lovely crimson flowers that are very attractive to bees and other beneficial insects.



## YELLOW SWEET CLOVER

Fast to establish, biennial legume, a strong rooting plant which improves soil structure.





# SMALL SEEDS

## FORAGE RAPE

This is a most useful crop and can be sown at any time from March to September providing food from Autumn to Spring.

**Broad Leaf Essex** - More winter hardy than English Giant and slightly shorter.

**English Giant** - Broad leaved variety, selected for its hardiness. Immense growth and a large broad leaf.



## BORAGE

This is a cobalt blue flowered herb, said to have been introduced into Britain by the Romans, but is now considered to be indigenous. It is a fast growing annual completing its full growing cycle in about four months. The plants are very robust and hardy and with its rapid growth rate, it tends to smother out most weeds. Borage flowers attract both wild and honey bees in very large numbers. Sown in the Spring at 6 kilos per acre and swathed in July when seed-drop is imminent, this oil crop will thrive on most soil types.



## SWEETCORN

We can offer Super Sweet varieties which have a higher sugar content and slower starch conversion to give a sweeter flavour. Please contact us for availability.

## MUSTARD

**Tilney** - This variety produces high green weight matter up to flowering. Church of Bures are the sole maintainers in the UK for Tilney. It has excellent standing ability and produces large volumes of green matter and residual fibre. There is a leaflet available, with all the necessary information.



## CRESS

**Plain** - Plain leaved, quick growing variety. Mainly grown for salad use.

**Broad Leaf** - Similar to Plain Cress but with a larger, broader leaf. Also grown for salad use.

## VETCH (TARES)

Vetches are very important in UK agriculture. They form an essential part of any green manure mixture as their leafy plant is ideal for ploughing in to improve soil humus and structure. Arable silage mixtures also benefit from the inclusion of vetches.

**English Early** - Its nitrogen-fixing properties and ability to smother weeds due to its dense foliage make this an ideal part of the organic conversion process. As a leafy and leguminous plant it is an excellent, cost effective crop, especially on organic farms.





# ROOTS & PUMPKINS

## KALE

**Marrow Stem** - A valuable crop suitable for the dairy herd coming off grass for the autumn. Has a thick stem and large nutritious leaves.

**Thousand Head** - Although it is not as palatable as Marrow Stem, it is more leafy and frost resistant. Provided it is not over-mature or grown too large, cattle will eat the stem completely.



## TURNIP

**Green Globe** - An excellent white-fleshed turnip with green top root. High feeding value and good keeping quality.



## STUBBLE TURNIP

**Barkant** - This purple top variety has high leaf and root yield and is suitable for summer or autumn use.

Telephone: 01787 227654 • [churchofbures.co.uk](http://churchofbures.co.uk)  
[info@churchofbures.co.uk](mailto:info@churchofbures.co.uk)

## PUMPKINS

Usually used for pie making, roasting or having as a soup, some are ideal for Halloween.



**Blue Kuri** - Unusual fruit with a blue-grey skin and deep orange flesh. Early maturing. Both the fruit and seeds can be cooked and eaten.

**Casperita** - Small white pumpkin, ideal for farmshop sales.

**Crown Prince** - Renowned for its eating qualities. Large fruit with deep orange flesh that will grow to 3-4kg.

**Goosebumps** - Warted pumpkin that is very popular for displays.

**Harlequin** - Acorn shaped, green and cream striped with exceptionally sweet flesh.

**Jack O'Lantern** - The traditional Halloween pumpkin used for carving. Bright orange skin with very tasty flesh that can be roasted, baked or made into a variety of dishes.

We have a wide range of varieties available, please contact us to find out more.





# BEANS

Field Beans are one of the world's most important legume crops and world production exceeds four million tonnes per annum.

*There is a substantial usage of small, uniform round-seeded tic beans in the diet of racing pigeons in the UK, Belgium and Germany. Maris Bead is a tic bean that is used in this market. Maris Bead is a Church of Bures variety having been purchased from PBI. The input costs for growing tic beans are not necessarily greater than for animal feed. The crop must be harvested and dried very carefully. Tic beans should not be harvested less than 15.5-16.0% moisture where possible or dried at high temperatures because these conditions cause the seed to crack and split.*

## SPRING BEANS

**Maris Bead** - This is a Church of Bures variety. The round seed is small and is predominantly used for the pigeon trade. Medium/early ripening and good standing power. For an established variety it has good Downy Mildew resistance.



## BROAD BEANS

**Aquadulce** - The most popular variety for autumn sowing and as such produces consistent high yields and beans of superb eating quality. A favourite with gardeners and commercial producers.

**Bunyards Exhibition** - This high yielding white seeded variety has long pods which make it ideal for picking.

**Express** - Early white-eyed variety with black and white flowers. Very popular with commercial growers.

**Giant Exhibition** - White seeded variety with long pods of excellent quality. Good variety for the fresh market.

**Imperial Green Longpod** - Excellent quality green seeded variety. Long pods containing 6-7 seeds per pod.



**Masterpiece Green Longpod** - This variety has green seeds and produces pods similar in length to Bunyards Exhibition.

**The Sutton** - Early heavy cropping dwarf variety. Rather short pods, with about 4-5 beans per pod. Height 1'30 cm.

**Witkiem** - Early variety producing a high yield of broad well-filled pods and a tasty crop.

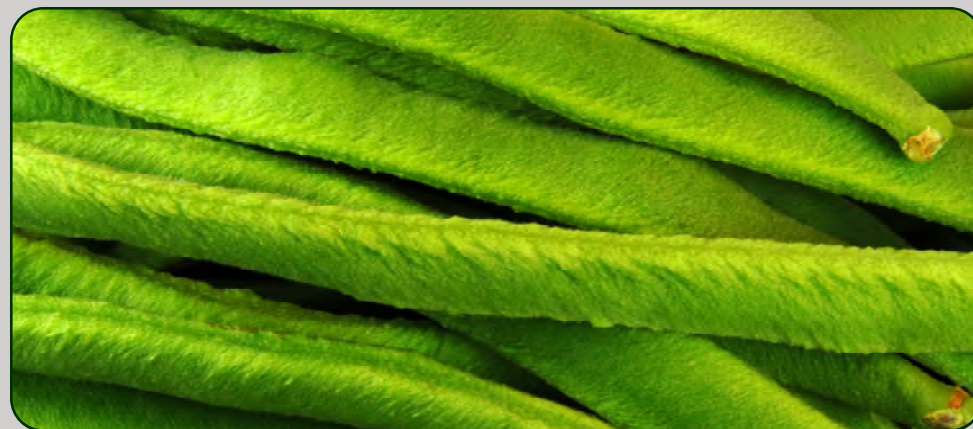
## RUNNER BEANS

**Enorma** - One of the best varieties for pulling. Has long pods of very fine texture.

**Prizewinner** - This variety produces an abundance of long pods of fine texture. Excellent table quality.

**Scarlet Emperor** - Although this variety has been on the market for many years it is still very popular particularly with the amateur gardener but also with Commercial Growers. Long pods and excellent cropper.

**Streamline** - A reliable favourite. Long podded, good for table use and for exhibition. Very popular with the vegetable gardener and commercial producer.



## CLIMBING BEANS

**Blue Lake** - Round pods similar to dwarf french beans. These are for the fresh market, but also suitable for freezing. White seeded.



# CONSERVATION

## FIELD MARGINS

### 2m Margin & Beetle Bank

50% Cocksfoot  
30% Strong Creeping Red Fescue  
20% Timothy  
**10kgs per Acre / 25kgs per Hectare**

### 6M MARGIN & STEWARDSHIP

#### Church of Bures Stewardship

20% Smooth Stalked Meadow Grass  
20% Meadow Fescue  
20% Chewings Fescue  
20% Sheeps Fescue  
10% Timothy  
10% Browntop Bent  
**10kgs per Acre / 25kgs per Hectare**

#### Bumblebees & Butterflies

This is an excellent way to attract bees, butterflies and many other insects. This mixture is ideal for domestic wildlife projects and farmers alike.

50% Borage  
30% Phacelia  
20% Red Clover  
**6kgs per Acre / 15kgs per Hectare**



## POLLEN & NECTAR

### Pollen & Nectar with Grass

20% Crested Dogtail  
20% Meadow Fescue  
10% Chewings Fescue  
10% Sheeps Fescue  
10% Timothy  
5% Strong Creeping Red Fescue  
5% Browntop Bent  
5% Red Clover  
2% Alsike Clover  
5% Sainfoin  
4% Vetch  
4% Birdsfoot Trefoil  
**10kgs per Acre / 25kgs per Hectare**

### Nectar Rich

10% White Clover  
10% Red Clover  
10% Birdsfoot Trefoil  
10% Sainfoin  
20% Vetch  
10% Fenugreek  
10% Lucerne  
20% Phacelia  
**5kgs per Acre / 12.5kgs per Hectare**





# COUNTRYSIDE STEWARDSHIP

The Countryside Stewardship scheme provides financial incentives for farmers and land managers to help look after their environment by conserving and restoring wildlife habitats. The scheme will continue to be available for both existing and new applicants until 2024, with the last of the new applications being accepted in 2023. Any applications starting after 2024 will be managed through the new Environmental Land Management Scheme (ELMS). DEFRA will be phasing out Direct Payments between now and 2027, with the money from this being put back into farming and the countryside via the Countryside Stewardship and Environmental Land Management Schemes.

## AB1 - Nectar Flower

Providing areas of flowering plants to boost essential food sources for beneficial pollinators, such as; bumblebees, solitary bees, butterflies and hoverflies.

45% Vetch  
20% Red Clover  
10% Alsike Clover  
6% Phacelia  
6% Lucerne  
5% Yellow Blossom Sweet Clover  
3% Birdsfoot Trefoil  
2% Black Medick  
1% Knapweed  
1% Ox Eye Daisy  
1% Yarrow

**6kgs per Acre / 15kgs per Hectare**



## AB3 - Beetle Banks

Provides nesting and foraging habitats for insects (including those that feed on crop pests), bumblebees, small mammals and some farmland birds.

60% Strong Creeping Red Fescue  
20% Hard Fescue  
15% Timothy  
5% Cocksfoot

**8kgs per Acre / 20kgs per Hectare**

## AB8 - Flower Rich Margins

Flower-rich grass margins provide important habitat and foraging sites for invertebrates (including wild pollinators) and birds. Supplying an abundant supply of pollen and nectar-rich flowers throughout the summer.

40% Creeping Red Fescue  
15% Hard Fescue  
15% Chewings Fescue  
5% Smooth Stalked Meadow Grass  
5% Crested Dogtail  
5% Red Clover  
4% Vetch  
3% Alsike Clover  
3% Sainfoin  
2% Phacelia  
0.7% Birdsfoot Trefoil  
0.3% Knapweed  
0.4% Field Scabious  
0.2% Ox Eye Daisy  
0.4% Self Heal  
0.3% Meadow Buttercup  
0.3% Ladys Bedstraw  
0.4% Ribwort Plantain

**8kgs per Acre / 20kgs per Hectare**





# COUNTRYSIDE STEWARDSHIP

## AB9 - Winter Bird Food

Providing an abundant supply of small seeds during the autumn and winter Months therefore this mixture provides important food resources for farmland birds, especially in autumn and winter.

### 1 Year

60% Triticale  
18% Barley  
5% White Millet  
5% Sunflower  
4% White Mustard  
3% Linseed  
3% Quinoa  
2% Phacelia

**20kgs per Acre / 50kgs per Hectare**

### 2 Year

60% Triticale  
18% Barley  
5% White Millet  
5% White Mustard  
4% Quinoa  
3% Kale  
3% Rape  
2% Phacelia

**20kgs per Acre / 50kgs per Hectare**



## Church Wild Bird

30% White Millet  
20% Canary  
15% Linseed  
15% Sunflower  
10% Triticale  
5% Kale  
5% Quinoa

**20kgs per Acre / 50kgs per Hectare**

## AB12 - Supplementary Winter Feeding

This scheme provides important food resources for farmland birds in late winter and early spring. It gives the birds food through the late winter period when seed is in short supply and as they enter the breeding season.

You must combine cereals, with small seeds making up a minimum of 30% of the total weight, choosing at least 3 of the following:

- Canary Seed
- Linseed
- Rape
- Red Millet
- White Millet
- Sunflower Hearts



## AB15 - Two Year Sown Legume Fallow

Providing food for farmland wildlife, such as pollen and nectar for pollinators, and invertebrate chick food for farmland birds. It can also be a useful part of a rotation aimed at reducing blackgrass populations. To be sown as soon as possible after harvest.

50% Vetch  
10% Crimson Clover  
10% Alsike Clover  
10% Lucerne  
10% Red Clover  
7% Berseem Clover  
2% Birdsfoot Trefoil  
1% Black Medick

**8kgs per Acre / 20kgs per Hectare**

If you suffer with blackgrass, we would recommend that you add Perennial Ryegrass to the mixture to help smother blackgrass.





### AB16 - Autumn Sown Bumblebird

Provides important food resources for farmland birds and a range of nectar feeding insects, including butterflies and bumblebees.

- 33% Winter Triticale
- 33% Winter Wheat
- 2% Fodder Radish
- 3.4% Gold of Pleasure
- 3.4% Kale
- 8.4% Winter Linseed
- 1% Alsike Clover
- 1% Birdsfoot Trefoil
- 6.8% Vetch
- 5% Crimson Clover
- 1% Lucerne
- 1% Phacelia
- 1% Red Clover

**20kgs per Acre / 50kgs per Hectare**



### GS4 - Legume & Herb Rich Swards

A vigorous sward with abundant legumes and herbs, suitable for productive cattle and sheep, will also provide habitat and food for invertebrates, including crop pollinators, and improve soil structure and water infiltration.

- 25% Late Perennial Ryegrass
- 25% Strong Creeping Red Fescue
- 10% Meadow Fescue
- 15% Timothy
- 10% Red Clover
- 5% Smooth Stalked Meadow Grass
- 2.87% Sainfoin
- 2% Lucerne
- 2% Birdsfoot Trefoil
- 1% Fenugreek
- 0.63% Sheeps Parsley
- 0.37% Ribgrass
- 0.50% Chicory
- 0.50% Sheeps Burnet
- 0.13% Yarrow

**10kgs per Acre / 25kgs per Hectare**



### Environmental Land Management Scheme (ELMS)

There are three new schemes that will reward environmental land management by providing financial incentives:

- Sustainable Farming Incentive
- Local Nature Recovery
- Landscape Recovery

These are intended to support the goals of the 25 year environment plan and commitment to reach net zero by 2050. The Sustainable Farming Incentive is to pay for environmentally sustainable land management.

We are able to work with yourselves to put together mixtures that complement both the scheme and also your land.



# GAME COVER

## Late Spring & Early Summer Sowing

**Artichokes** - Produce good early cover and provide birds with excellent food throughout the winter. Drill with a potato planter in ridged rows. This product is perishable and must be drilled as soon as possible upon receipt of the tubers.

- Drill: March - April @ 500kgs per acre in 75-90cm rows.
  - Height: 5'-6' / 150-180cm
- NB Minimum order 250kgs*

**Buckwheat** - This game crop matures quickly to supply continuous food and cover throughout the Autumn. A good ingredient for mixtures.

- Drill: May/June @ 50kgs/Acre 125kgs/Hectare in 12-18cm rows.
- Height: 2'-3' / 60-90cm

**Canary Grass** - Hardy perennial which can last up to 10 years. Once established it provides excellent warm cover breaks holding in birds. Recommended by Game Conservancy for its excellent holding ability in the warm dense foliage that it produces.

- Drill: May/June @ 2kgs/Acre 5kgs/Hectare in 60-75cm rows.
- Height: 3'-4' / 90-120cm

**Canary Seed** - Dense annual crop providing low cover and valuable food during winter months. Canary seed is often used as an ingredient in mixtures as it creates a bushy plant similar to grass with lots of seed heads.

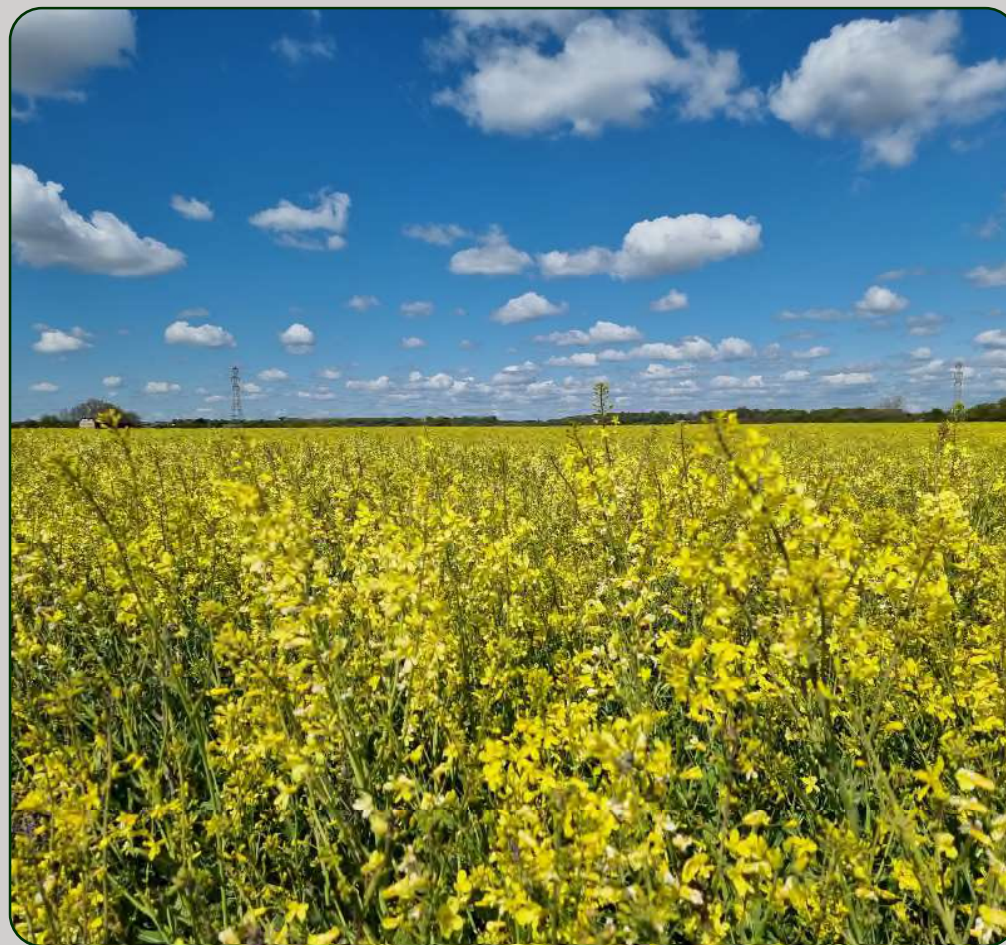
- Drill: March/April @ 15kgs/Acre 37kgs/Hectare in 20cm rows.
- Height: 2'-3' / 60cm-90cm

**Dwarf Sorghum** - This is a dense leafy cover crop offering good feeding value. It is a single cross hybrid, which is early to mature, and has a high grain potential. The variety we offer has large leaves and very good standing power. It stands about 2/3rds the height of Giant Sorghum and remains standing to provide warm cover as well as height to lift the birds.

- Drill: May-July @ 8kgs/Acre 20kgs/Hectare in 20-30cm rows.
- Height: 3'-4' / 90cm-120cm

**Kale** - Traditionally this has always been the most popular game cover crop. It stands well throughout the season and its broad leafy plant with thick stems provides the perfect game cover. Underneath the plants is a bare floor, which is ideal for pheasants especially when hand fed. Thousand Head is popular due to the large number of broad leaves and Marrow Stem's thick stalk creates an effective umbrella type canopy.

VARIETY	HEIGHT	DRILL	RATE	ROW
Marrow Stem	4' / 120cm	May / June	2kgs per Acre 5kgs per Hectare	60cm
Thousand Head	3.5' / 105cm	May / June	2kgs per Acre 5kgs per Hectare	60cm



**Linseed** - Produces valuable food in autumn making it a very useful ingredient in game cover mixtures.

- Drill: April/May @ 25kgs/Acre 62kgs/Hectare
- Height: 1'-2' / 30-60cm



**Maize** - A very popular choice, which will produce an excellent canopy that will last well into the winter. Cobs filled with grain also have feed value giving an excellent cover crop to hold the birds.

- Drill: April/June @ 45,000 Seeds per Acre Pack.
- Height: 6' / 180cm



**Red & White Millet** - Excellent game cover crop which can also be used to enhance maize. It produces good, low cover for partridges and pheasants with the seed heads providing food.

**Japanese Reed** - Stronger and more winter hardy, member of the millet family. Good cover and feed crop.

- Drill: April/May @ 12.5kgs/Acre 30kgs/Hectare in 25-30cm rows.
- Height: 4' / 120cm

**Quinoa** - Food crop producing large volumes of seed that ripens and sheds continuously for many months.

- Drill: April/May @ 4kgs/Acre 10kgs/Hectare in 30-40cm rows.
- Height: 4' / 120cm

**Giant Sorghum** - This is a huge plant which creates a canopy of shelter. Our variety Susu is hardy, vigorous and can grow up to 7' (210 cm), but if drilled slightly later, the more desirable height of 5' - 6' can be achieved.

- Drill: May/July @ 12kgs/Acre 30kgs/Hectare in 30-40cm rows.
- Height: 5'-7' / 180-210cm

**Sunflower** - Very tall crop which provides plenty of food in autumn and is also good in mixtures.

- Drill: May/June @ 5kgs/Acre 12kgs/Hectare in 50cm rows.
- Height: 5' / 150cm



**Texsel Greens** - This plant is a member of the rape family and looks similar initially, but when left to mature they make a good game cover crop. They are very quick to produce seed and can mature to full plant by the end of October even when planted in July. No other brassica crop grows as fast, and no other crop provides a micro climate of insect life for game birds in such a short time period.

- Drill: June/September @ 2.5kgs/Acre 6kgs/Hectare
- Height: 4'-5' / 120-150cm

**Triticale** - A hybrid cross of wheat and rye. Excellent for use in winter bird food mixtures. Provides good cover and feed in low fertility areas.

- Drill: April-June @ 75kgs/Acre 187.5kgs/Hectare.
- Height: 3'-4' / 90-120cm



# GAME COVER

## Later Sowing

**Fodder Radish** - When planted early, this bushy plant can grow up to 5' tall. It can also be sown as late as September and is often used in emergencies.

- Drill: May-September @ 5kgs/Acre 12kgs/Hectare in 20-30cm rows.
- Height: 4'-5' / 120cm-150cm

**Mustard** - A very good cover. Often used as a standby if other game crops fail as it can be drilled up to mid September and grown on very poor soils. Our variety, Tilney, is one of the most winter hardy varieties available.

- Drill: June-September @ 6kgs/Acre 15kgs/Hectare in 20-30cm rows.
- Broadcast @ 9kgs/Acre 22kgs/Hectare
- Height: 2' / 60cm

**Phacelia** - Provides a quick, thick, dense cover which blankets weeds.

- Drill: Broadcast June-August @ 4kgs/Acre 10kgs/Hectare
- Height: 1'-2' / 30cm-60cm



**Stubble Turnips** - Can be broadcast or drilled on stubble to produce effective large-leaved cover.

- Drill: July-September @ 4kgs/Acre 10kgs/Hectare in 20-30cm rows.
- Height: 1' / 30cm

## Mixtures

**Red & White Millet** - This millet mixture produce an abundance of food, as the red millet matures earlier than the white, extending the feeding period, so the mix creates a fantastic reliable cover crop.

50% Red Millet  
50% White Millet  
**10kgs per Acre / 25kgs per Hectare**

**Red, White & Japanese Reed Millet** - As above, with japanese reed millet included.

40% Red Millet  
40% White Millet  
20% Japanese Reed Millet  
**12kgs per Acre / 30kgs per Hectare**



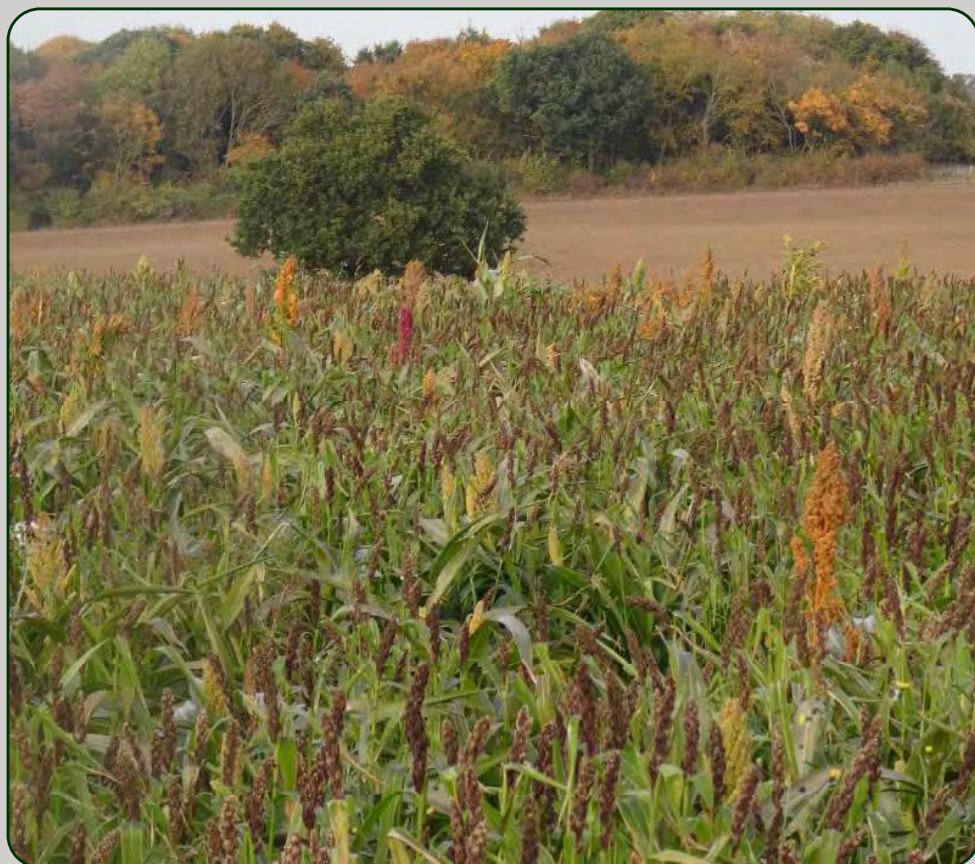


**Quinoa & Kale** - Quinoa is a tall colourful plant producing a mass of seed heads up the full length of the stem. This very popular mixture combines the holding qualities of kale and the fantastic feed production of quinoa, to provide an excellent game cover crop.

66% Quinoa  
34% Kale  
**3kgs per Acre / 7.5kgs per Hectare**

**Church Game Cover** - By mixing crops it is possible to combine the best feed with the best cover. This mixture thrives under most soil and temperature conditions and needs very little attention. This is an excellent hardy general-purpose mixture.

30% Buckwheat  
20% Canary Seed  
15% Linseed  
15% Sunflower  
10% Mustard  
5% Kale  
5% Forage Rape  
**9.5kgs per Acre / 24kgs per Hectare**



**Mustard & Fodder Radish** - Mustard and Fodder Radish are extremely vigorous in their growth habit. Mustard establishes very quickly and Fodder Radish grows into a 4' bushy plant. For patching up in bare areas of game cover or when a game crop has failed completely, this is an ideal mix because it can be drilled as late as September to create some cover.

66% Mustard  
34% Fodder Radish  
**6kgs per Acre / 15kgs per Hectare**





# WILDFLOWERS

## CENTIVINTENNIAL

Our Centivintennial mixture celebrates our 120 year anniversary. Containing twenty one UK native wildflowers, designed to offer impact in the first year and also longevity. Creating a permanent meadow that flowers from April to October, providing habitat and food sources for pollinating insects. This mixture supports bees, butterflies and other pollinators, with 86% of the species recommended by the Royal Horticultural Society as Perfect for Pollinators.

### Flora

20%  
OF THE  
MIXTURE

- |      |                   |                              |
|------|-------------------|------------------------------|
| • 2% | Agrimony          | <i>Agrimonia eupatoria</i>   |
| • 6% | Birdsfoot Trefoil | <i>Lotus corniculatus</i>    |
| • 2% | Bladder Campion   | <i>Silene vulgaris</i>       |
| • 2% | Common Knapweed   | <i>Centaurea nigra</i>       |
| • 4% | Corn Chamomile    | <i>Anthemis arvensis</i>     |
| • 6% | Corn Cockle       | <i>Agrostemma githago</i>    |
| • 9% | Corn Flower       | <i>Centurea cyanus</i>       |
| • 6% | Corn Marigold     | <i>Chrysanthemum segetum</i> |
| • 4% | Cowslip           | <i>Primula veris</i>         |
| • 6% | Field Scabious    | <i>Knautia arvensis</i>      |
| • 6% | Forget Me Not     | <i>Myosotis arvensis</i>     |
| • 8% | Foxglove          | <i>Digitalis purpurea</i>    |
| • 7% | Meadow Buttercup  | <i>Ranunculus acris</i>      |
| • 2% | Ox Eye Daisy      | <i>Leucanthemum vulgare</i>  |
| • 6% | Poppy             | <i>Papaver rhoeas</i>        |
| • 2% | Ragged Robin      | <i>Lychnis flos-cuculi</i>   |
| • 6% | Red Campion       | <i>Silene dioica</i>         |
| • 3% | Sainfoin          | <i>Onobrychis viciifolia</i> |
| • 6% | Salad Burnet      | <i>Sanguisorba minor</i>     |
| • 3% | White Campion     | <i>Silene alba</i>           |
| • 4% | Wild Clary        | <i>Salvia verbenaca</i>      |

### Grasses

80%  
OF THE  
MIXTURE

- |       |                             |                                |
|-------|-----------------------------|--------------------------------|
| • 10% | Browntop Bent               | <i>Agrostis capillaris</i>     |
| • 25% | Chewings Fescue             | <i>Festuca rubra commutata</i> |
| • 25% | Creeping Red Fescue         | <i>Festuca rubra litoralis</i> |
| • 10% | Crested Dogstail            | <i>Cynosurus cristatus</i>     |
| • 10% | Meadow Fescue               | <i>Festuca pratensis</i>       |
| • 10% | Hard Fescue                 | <i>Festuca trachyphylla</i>    |
| • 10% | Smooth Stalked Meadow Grass | <i>Poa pratensis</i>           |

Sowing rate 1kg per 250yd2/200m2 - 12kgs per Acre / 30kgs per Hectare

## CONSTABLE

Our Constable mixture contains thirteen UK native wildflowers, mixed in with our carefully selected blend of attractive and ornamental non-aggressive grasses, worthy of appreciation in their own right. Providing a stable way of establishing a beautiful meadow using an attractive variety of native species, offering a range of colours throughout the flowering season. This mixture supports bees, butterflies and other pollinators, with 77% of the species recommended by the Royal Horticultural Society as Perfect for Pollinators.

### Flora

20%  
OF THE  
MIXTURE

- |       |                      |                             |
|-------|----------------------|-----------------------------|
| • 10% | Birdsfoot Trefoil    | <i>Lotus corniculatus</i>   |
| • 12% | Black Medick         | <i>Medicago lupulina</i>    |
| • 6%  | Carrot               | <i>Daucus carota</i>        |
| • 9%  | Field Scabious       | <i>Knautia arvensis</i>     |
| • 9%  | Common Knapweed      | <i>Centaurea nigra</i>      |
| • 10% | Ladys Bedstraw       | <i>Galium verum</i>         |
| • 8%  | Meadow Buttercup     | <i>Ranunculus acris</i>     |
| • 4%  | Ox Eye Daisy         | <i>Leucanthemum vulgare</i> |
| • 3%  | Common St Johns Wort | <i>Hypericum perforatum</i> |
| • 10% | Ribwort Plantain     | <i>Plantago lanceolata</i>  |
| • 6%  | Salad Burnet         | <i>Sanguisorba minor</i>    |
| • 10% | Self Heal            | <i>Prunella vulgaris</i>    |
| • 3%  | Yarrow               | <i>Achillea millefolium</i> |

### Grasses

80%  
OF THE  
MIXTURE

- |       |                             |                                |
|-------|-----------------------------|--------------------------------|
| • 10% | Browntop Bent               | <i>Agrostis capillaris</i>     |
| • 25% | Chewings Fescue             | <i>Festuca rubra commutata</i> |
| • 25% | Creeping Red Fescue         | <i>Festuca rubra litoralis</i> |
| • 10% | Crested Dogstail            | <i>Cynosurus cristatus</i>     |
| • 10% | Meadow Fescue               | <i>Festuca pratensis</i>       |
| • 10% | Hard Fescue                 | <i>Festuca trachyphylla</i>    |
| • 10% | Smooth Stalked Meadow Grass | <i>Poa pratensis</i>           |

Sowing rate 1kg per 250yd2/200m2 - 12kgs per Acre / 30kgs per Hectare





## GAINSBOROUGH

The Gainsborough mixture has been formed to include less species than the Constable mix, containing eight UK native species, however there are far more seeds of each wild flower species. This improves the chance of establishment especially in areas where the soil is quite fertile and the grasses are allowed to grow quickly and dominate. This is a beautiful mixture which is complemented by the attractive and ornamental non-aggressive grasses, worthy of appreciation in their own right. This mix supports bees, butterflies and other pollinators, with 75% of the species recommended by the Royal Horticultural Society as Perfect for Pollinators.

### Flora

20%  
OF THE  
MIXTURE

- |       |                   |                             |
|-------|-------------------|-----------------------------|
| • 12% | Common Knapweed   | <i>Centaurea nigra</i>      |
| • 15% | Field Scabious    | <i>Knautia arvensis</i>     |
| • 8%  | Ox Eye Daisy      | <i>Leucanthemum vulgare</i> |
| • 10% | Birdsfoot Trefoil | <i>Lotus corniculatus</i>   |
| • 16% | Self Heal         | <i>Prunella vulgaris</i>    |
| • 12% | Meadow Buttercup  | <i>Ranunculus acris</i>     |
| • 12% | Ladys Bedstraw    | <i>Galium verum</i>         |
| • 15% | Ribwort Plantain  | <i>Plantago lanceolata</i>  |

### Grasses

80%  
OF THE  
MIXTURE

- |       |                             |                                |
|-------|-----------------------------|--------------------------------|
| • 10% | Browntop Bent               | <i>Agrostis capillaris</i>     |
| • 25% | Chewings Fescue             | <i>Festuca rubra commutata</i> |
| • 25% | Creeping Red Fescue         | <i>Festuca rubra litoralis</i> |
| • 10% | Crested Dogtail             | <i>Cynosurus cristatus</i>     |
| • 10% | Meadow Fescue               | <i>Festuca pratensis</i>       |
| • 10% | Hard Fescue                 | <i>Festuca trachyphylla</i>    |
| • 10% | Smooth Stalked Meadow Grass | <i>Poa pratensis</i>           |

**Sowing rate 1kg per 250yd2/200m2 - 12kgs per Acre / 30kgs per Hectare**



## CHURCH CORNFIELD

It is possible to create a striking meadow of annual cornfield flowers, containing five UK native wildflower species. When this mixture is established the result of this creates stunning colours, which can also be used to improve existing grassland.

- |       |                |                              |
|-------|----------------|------------------------------|
| • 10% | Corn Poppy     | <i>Papaver rhoeas</i>        |
| • 25% | Corn Flower    | <i>Centurea cyanus</i>       |
| • 17% | Corn Marigold  | <i>Chrysanthemum segetum</i> |
| • 8%  | Corn Chamomile | <i>Anthemis arvensis</i>     |
| • 40% | Corn Cockle    | <i>Agrostemma githago</i>    |

**Sowing rate 1kg per 250yd2/200m2 - 12kgs per Acre / 30kgs per Hectare**



## BRITANNIA

Containing three UK native wildflower species. When this mixture is established the result will create a stunning display consisting of the colours of the Union Jack.

- |       |                |                          |
|-------|----------------|--------------------------|
| • 20% | Corn Poppy     | <i>Papaver rhoeas</i>    |
| • 50% | Corn Flower    | <i>Centurea cyanus</i>   |
| • 30% | Corn Chamomile | <i>Anthemis arvensis</i> |

## WILDFLOWER SEEDS

There are numerous wildflower mixtures available for a wide range of situations and soils i.e. acid soils, damp loamy soils, calcareous soils, hedgerow and light shade, woodland, heavy shade, water margins and pond edges. It is therefore possible to construct a mixture to suit your needs and situation from the list of wildflower species.





# GRASSES

## LAWN MIXTURES

### Without Ryegrass

#### A Mix - **TOP QUALITY ORNAMENTAL**

A blend of fine and luxurious, traditional fescue and bent for exceptional golf green quality. Offering a superior, high quality and beautiful lawn with a wow factor. Suitable for top quality lawns, low wear tennis courts, croquet lawns and putting greens.

- 70% Chewings Fescue
- 30% Browntop Bent

#### B Mix - **FINE LAWN**

Ideal for a low wear and maintenance golf green like lawn, providing good germination with excellent year round colour.

- 90% Creeping Red Fescue
- 10% Browntop Bent

### With Ryegrass

#### C Mix - **ECONOMY**

Versatile with excellent wear tolerance offering good sward density. Suitable for both winter and summer sports.

- 70% Dwarf Perennial Ryegrass
- 30% Creeping Red Fescue

#### D Mix - **SUPERIOR ALL ROUNDER**

An excellent mixture for rapid renovation and construction of lawns. The inclusion of Perennial Ryegrass combined with fine fescues and bent grass ensures a dense, hard wearing lawn for all round family use whilst giving quality and good appearance.

- 45% Creeping Red Fescue
- 15% Chewings Fescue
- 35% Dwarf Perennial Ryegrass
- 5% Browntop Bent

#### E Mix - **SHADY LAWN**

Specifically designed to create an excellent, high quality lawn in shaded areas.

- 40% Dwarf Perennial Ryegrass
- 20% Creeping Red Fescue
- 20% Hard Fescue

For further, more specific amenity mixtures, please see our amenity catalogue, website or speak with Robert or Harry for further details, or for a bespoke mixture.



## SOWING RATE

- 68g/m<sup>2</sup> (2oz/yd<sup>2</sup>)
- 1kg covers 15m<sup>2</sup> (18yd<sup>2</sup>)





## AMENITY GRASSES

All of the grasses that we use in our mixtures are listed by the Sports Turf Research Institute (STRI). Each cultivar is selected by us to ensure their all round performance regarding tolerance of close mowing, shoot density, fineness of leaf, cleanliness of cut winter/summer greenness and the ability to grow strongly after mowing.

### Browntop Bent

Commonly used in lawns and golf courses, forming fine surfaces while tolerating close mowing. Also used in wild flower mixtures as it is non aggressive or competitive.

### Chewings Fescue

A fine leaved, grass used in the amenity sector. Excellent tolerance to frequent close mowing. Does not have an aggressive creeping habit, therefore there is less smothering.

### Dwarf Perennial Ryegrass

Low cutting frequency, good persistence, hard wearing, quick to germinate and establish. Works well with other low growing species like red fescues'

### Hard Fescue

A highly drought tolerant, low nutrient grass. Able to tolerate close mowing. Flexible in its diverse range of uses.

### Slender Creeping Red Fescue

A dense, species that has a creeping growth habit. Has a finer leaf and is has less aggressive growth, which makes it better suited to creating fine, high quality lawns.

### Smooth Stalked Meadow Grass

Known to be one of the greenest grasses in spring. When mown short, it is a valuable additional to a lawn. If left to grow, it offers food for several insects.

### Strong Creeping Red Fescue

As the name implies, this grass has creeping rhizomes. More vigorous than similar species which helps to create a dense, hardwearing lawn. The shallow roots help to remain green even in drier soils.



## AGRICULTURAL GRASSES

### Perennial Ryegrass

These vigorous grasses are durable, long lasting and tiller well. They form the basis of most pastures and their root capacity makes a big contribution to soil humus and soil fertility.

### Timothy

High yields with a very good first conversion cut at 67D. Excellent ground cover and mid-season digestibility.

### Cocksfoot

Produces high yields in late summer. Sometimes used as a special purpose grass on the drier, free-draining soils of East Anglia. It is often used in strips to provide habitat for aphid eating beetles.

### Meadow Fescue

A large fescue which is excellent for early grazing, and can be made into hay.

### Italian Ryegrass

These grasses grow quickly and early for a short duration. They provide the bulk of hay and under suitable management, continuous grazing.

### Westerwolds

Fast growing, useful for quick cropping, patching of leys and building up humus in orchards.

### Crested Dogstail

A traditional grazing grass, which helps fill the base of the sward. Grows well late into the season. Used in traditional pastures and alongside wild flowers.





# GRASSES

## Number 1 - LOW MAINTENANCE

Low growing grasses are from the amenity list therefore this mixture can be used as an alternative cost effective general purpose amenity grass mixtures.

5.0kg Dwarf Perennial Ryegrass  
5.0kg Strong Creeping Red Fescue  
**10.0kg per Acre**



## Number 2 - ONE YEAR RYEGRASS LEY

This short term mixture is very quick to establish and will provide large, high quality forage yields.

7.0kg Westerwolds  
7.0kg Tetraploid Italian Ryegrass  
**14.0kg per Acre**

## Number 3 - HAYLAGE

Haylage is simply forage that is baled at a higher moisture than dry hay and then stored in a sealed plastic wrap. Because of the high moisture level and air tight environment, the forage ferments and is preserved by acid production during fermentation. A big advantage of this is obviously the decreased curing time needed from cutting to baling which makes weather less of a factor.

7.0kg Late Perennial Ryegrass  
2.0kg Timothy  
2.0kg Late Tetraploid Perennial Ryegrass  
1.5kg Strong Creeping Red Fescue  
1.5kg Smooth Stalked Meadow Grass  
**14.0kg per Acre**

## Number 4 - GENERAL PURPOSE & EARLY BITE

A vigorous and highly productive one-year ley. Suitable for spring or early autumn sowing. The first cut is usually taken around the second and third weeks of May.

5.0kg Italian Ryegrass  
2.0kg Tetraploid Italian Ryegrass  
3.0kg Red Clover  
**10.0kg per Acre**

## Number 5 - HIGH YIELD SILAGE

This is an excellent mixture combining the best quality grass for a maximum yield. It provides a very high D-value at the first cut (weeks 2-3 in May) and a high soluble carbohydrate content which is important for good silage fermentation. No 5 will improve profitability with winter milk production due to the improved palatability and the reduced need for silage additives.

4.0kg Early Perennial Ryegrass  
4.0kg Italian Ryegrass  
4.0kg Tetraploid Italian Ryegrass  
3.0kg Intermediate Tetraploid Perennial Ryegrass  
**15.0kg per Acre**



## Number 6 - GOOD GENERAL PURPOSE

This is an excellent mixture full of highly listed varieties, useful for a multi-purpose grass situation. The ley will have a thick bottom sward for good hay, silage and grazing.

2.0kg Italian Ryegrass  
2.5kg Early Perennial Ryegrass  
3.0kg Intermediate Tetraploid Perennial Ryegrass  
4.0kg Late Perennial Ryegrass  
0.5kg White Clover  
**12.0kg per Acre**



**Number 7 - LONG TERM HAY**

A robust and resourceful mixture that contains persistent varieties ensuring good yields for cutting and grazing over many years. The late perennial ryegrass provides a thick bottom sward for good regeneration after each cut.

- 2.0kg Intermediate Perennial Ryegrass
- 6.0kg Intermediate Tetraploid Perennial Ryegrass
- 6.0kg Late Perennial Ryegrass

**14.0kg per Acre**

**Number 8 - INTENSIVE GRAZING**

This long-term ley is rich in quality grasses providing all year round hardwearing grazing. It is especially good for lamb production. The highly nutritious clover blend complements the late perennial ryegrass at the bottom of the sward. This hardy mixture can be used on all soil types.

- 3.0kg Early Perennial Ryegrass
- 2.0kg Intermediate Perennial Ryegrass
- 3.0kg Intermediate Tetraploid Perennial Ryegrass
- 2.0kg Late Perennial Ryegrass
- 3.0kg Late Tetraploid Perennial Ryegrass
- 1.0kg White Clover

**14.0kg per Acre**

**Number 9 - ALPACA**

Alpacas and Llamas have become increasingly popular in recent years. Due to their grazing habits, they tend to prefer lower growing, softer and leafier plants that are high in nutrition, but low in sugars. This mixture contains a variety of palatable and nutritional grasses.

- 3.5kg Timothy
- 3.5kg Strong Creeping Red Fescue
- 2.5kg Hard Fescue
- 2.0kg Meadow Fescue
- 1.0kg Smooth Stalked Meadow Grass
- 0.5kg Highland Bent

**13.0kg per Acre**

**Number 10 - LONG TERM LEY**

The mix of grasses in this long term ley have been selected to produce excellent yields for cutting and grazing over many years. The Timothy is exceptionally resistant to cold temperatures and provides good late season growth. The combination of white clover and vigorous perennial ryegrass provides an excellent sward for grazing and cutting. No 10 is often used as a general purpose long term ley.

- 3.0kg Early Perennial Ryegrass
- 1.0kg Intermediate Perennial Ryegrass
- 4.0kg Late Perennial Ryegrass
- 2.0kg Late Tetraploid Perennial Ryegrass
- 1.0kg Medium Timothy
- 1.0kg Late Timothy
- 0.5kg White Clover

**12.5kg per Acre**



# GRASSES

## Number 11 - SHEEP & YOUNG STOCK

Our sheep and young stock mixture is intended for profitable stock production with the emphasis placed on seasonal production, live weight gain and fattening. The white clover increases production, reduces inputs and maintains profit margins.

2.0kg	Early Perennial Ryegrass
4.0kg	Intermediate Perennial Ryegrass
4.5kg	Late Perennial Ryegrass
1.0kg	Medium Timothy
1.0kg	Late Timothy
0.5kg	White Clover
<b>13.0kg per Acre</b>	



## Number 12 - HORSE & Paddock

For a permanent horse pasture, this mixture is one of the best available. It is specifically constructed for horse paddocks and stud farms to provide balanced grazing and tough dense turf. The ley can be grazed intensively throughout the year and the creeping red fescue has excellent repairing qualities for the heavy users

2.0kg	Early Perennial Ryegrass
2.0kg	Intermediate Perennial Ryegrass
3.0kg	Late Perennial Ryegrass
2.0kg	Late Tetraploid Perennial Ryegrass
1.0kg	Meadow Fescue
1.0kg	Medium Timothy
1.0kg	Late Timothy
1.5kg	Creeping Red Fescue
<b>13.5kg per Acre</b>	



## HERBS FOR HORSES

An excellent additive for both of our horse mixtures and popular with horse lovers. A simple herb blend in the ley enables horses to receive an increased mineral intake in the diet. Most wild herbs are drought resistant and can improve drainage with their deep roots penetrating the subsoil. The flavour of the herbs improves the palatability and thus the horses relish the fresh herb ley.

20% Chicory	<i>Cichorium intybus</i>
20% Sheeps Burnet	<i>Sanguisorba minor</i>
15% Ribgrass	<i>Plantago lanceolata</i>
5% Yarrow	<i>Achillea millefolium</i>
15% Sainfoin	<i>Onobrychis viciifolia</i>
25% Sheeps Parsley	<i>Petroselinum crispum</i>



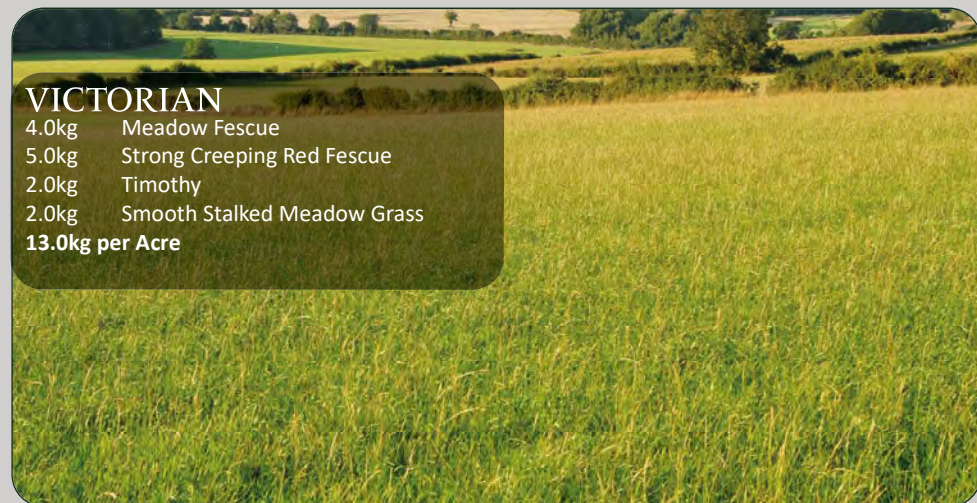


## NATURAL HORSE

A non-ryegrass horse mixture which contains a wide selection of traditional, natural grasses providing a healthy, balanced diet. Research has linked the consumption of ryegrass with an increased risk of laminitis so by avoiding ryegrass the pasture offers the horses and ponies a pasture rich in nutrients and minerals but not in sugars.

3.5kg	Meadow Fescue
3.0kg	Strong Creeping Red Fescue
2.0kg	Timothy
2.0kg	Crested Dogtail
1.5kg	Cocksfoot
1.5kg	Hard Fescue
0.5kg	Highland Bent

**14.0kg per Acre**



## VICTORIAN

4.0kg	Meadow Fescue
5.0kg	Strong Creeping Red Fescue
2.0kg	Timothy
2.0kg	Smooth Stalked Meadow Grass

**13.0kg per Acre**



## REARING PEN

Low growth mixture but hard wearing with the inclusion of White Clover to attract insect activity for young poults.

6.0kg	Dwarf Perennial Ryegrass
6.0kg	Strong Creeping Red Fescue
2.5kg	White Clover

**14.5kg per Acre**

## VINEYARD

Turf makes vineyard maintenance easier and safer. Rain on the soil surface can spread vineyard diseases. Grass lowers the risk of disease disposal. Clover is added to the mixture as a low cost and sustainable way to add nitrogen into the soil, acting as a slow release fertiliser for the companion grasses.

6.0kg	Dwarf Perennial Ryegrass
4.0kg	Strong Creeping Red Fescue
2.0kg	Hard Fescue
3.0kg	Smooth Stalked Meadow Grass
1.0kg	White Clover

**16.0kg per Acre**



## POLLINATING VINEYARD

Designed to create a low growing grass sward while also providing necessary resources for pollinating insects. The flowering species will bloom through spring and summer.

5.0kg	Chewings Fescue
2.0kg	Strong Creeping Red Fescue
2.0kg	Hard Fescue
2.0kg	Dwarf Perennial Ryegrass
0.5kg	Browntop Bent
0.8kg	Crested Dogtail
0.5kg	Red Clover
0.5kg	Birdsfoot Trefoil
0.4kg	White Clover
0.3kg	Alsike Clover

**14.0kg per Acre**

## BESPOKE MIXTURES

Mixing all our own grass leys here at Church of Bures, means that we are very well placed to produce bespoke mixtures if required. Whether this is a tweak to one of our standard mixes, or for a mixture to be made completely to your own specification. Please contact us for advice and to discuss your requirements.



# SEEDS REQUIRED PER STATUTE ACRE / HECTARE

All seeds scheduled in the Seeds Regulations have been tested in accordance with the provisions of the Regulations in purity (as defined) and germination are not less than the prescribed declarable minima percentage, unless otherwise stated. For declarable minima purity (P) and germination (G) see figures below.



SPECIES	SOWING RATE PER ACRE	SOWING RATE PER HECTARE	P	G
Beans - Broad	100 kilos	250 kilos	98	80
Beans - Winter	95 kilos	238 kilos	98	85
Beans - Spring (Maris)	75 kilos	188 kilos	98	80
Borage	6 kilos	15 kilos		
Canary Seed	15 kilos	38 kilos		
Clover - Red	6.5 kilos	16 kilos	97	80
Clover - White	2 kilos	5 kilos	97	80
Cocksfoot	8 kilos	20 kilos	90	80
Fodder Beet	50,000 seeds per acre		97	73
Kale	2 kilos	5 kilos	98	75
Linseed	25 kilos	63 kilos	99	85
Lucerne	9 kilos	23 kilos	97	80
Maize	45,000 seeds per acre		98	80
Mangel	3.5 kilos	9 kilos	97	73
Maples	100 kilos	250 kilos	98	80
Millet - Red / White	12.5 kilos	31 kilos		
Mustard (Broadcast)	9 kilos	23 kilos	98	85
Mustard (Drilled)	6 kilos	15 kilos	98	85
Peas	100kilos	250 kilos	98	80
Quinoa	4 kilos	10 kilos		
Rape (Broadcast)	5 kilos	13 kilos	98	85
Rape (Drilled)	3 kilos	8 kilos	98	85
Runner Beans	20 - 40 kilos	50 - 100 kilos	99	80
Ryegrass - Hybrid	14 kilos	35 kilos	96	75
Ryegrass - Italian	14 kilos	35 kilos	96	75
Sorghum - Dwarf	8 kilos	20 kilos		
Sorghum - Giant	12 kilos	30 kilos		
Sunflower	5 kilos	13 kilos	98	85
Trefoil	3.5 kilos	9 kilos	97	80
Turnip	2 kilos	5 kilos	97	80
Turnip - Stubble	3 kilos	8 kilos	97	80
Vetch (Tares)	62 kilos	155 kilos	98	85



# GENERAL TERMS & CONDITIONS OF SALE

**TERMS OF PAYMENT** - Unless otherwise stated, our terms are strictly net cash. A credit surcharge of 10% of the total value will be added to all invoices. This surcharge may be deducted if payment is made within 28 days of the date of invoice- payment thereafter will be strictly net and includes the credit charge. If the invoice is not paid after a further one month, we reserve the right to charge interest at the rate of 2% per month on the outstanding amount.

**TITLE** - Title to the goods is reserved and shall not pass to the buyer until such time as payment has been made in full.

**CARRIAGE** - All orders priced ex farm will have carriage charged at cost.

**LATENT DEFECT** - Diseases of plants can be transmitted by the wind, by insects, by animals or by human agencies and may be seed borne or soil borne. We believe the seed hereby sold to be free from latent defect, but it is not a condition of sale nor do we warrant that any seed sold by us shall be free from such defect and will not be responsible in any way for the resultant crop.

**MINIMUM ORDER VALUE** - The minimum order for credit on account is £50.00

**CONDITIONS OF SALE** - Title to the goods remains with the supplier until invoice(s) are settled in full. The seller retains the right of title over the goods and any income from subsequent crops or derived products until the entire outstanding amount is settled. The seller reserves the right to suspend other or outstanding deliveries until outstanding amounts have been settled.

**GDPR** - General Data Protection Requirement. Church of Bures will never share or sell our database to any third parties. Our website has not been set up to request any personal or work email addresses or further private information that could effect you or your company being targeted by third company marketing companies. However, our website and office database is not secure and therefore cannot guarantee that we could be spied upon from third parties to gather this information. All correspondence between you/or your company and Church of Bures is entirely held at your own risk.

Seed returned will only be credited in full, subject to our seal being unbroken and that we can sell elsewhere during the season purchased. A handling fee of 15% will be charged on any seed returned. NB- This does not apply to mixed seeds, or those with a chemical treatment.

Seeds sold by us are guaranteed to comply at the time of delivery with the UK Seeds Regulations currently in force.

All information contained in the catalogue or given by our personnel and relating to varieties, varietal characteristics or periods of maturity or fitness for any particular purpose or otherwise relating to the performance of seeds is given for general guidance only. Variation in local or climatic conditions can render such information inaccurate. Customers are therefore advised that any such information given to them does not constitute a representation by us as to these matters and should not be relied on as such. Customers should satisfy themselves that any seeds which they order are of a variety and performance satisfactory for their requirements and order such seeds at their own risk. Customers are advised that our personnel have no authority to give more than general guidance as described above to customers and we disclaim liability for any advice given or opinion expressed by them. Such advice is followed, or opinion acted upon, entirely at the customer's own risk.

**VINING PEAS** - Protected varieties of vining peas are protected by plant breeders' rights under either The Plant Varieties and Seeds Act 1964 or The Plant Varieties Act 1997 or subsequent directives or acts. Permission to use farm-saved, bypass or intentionally grown seed is not automatically given. By purchasing seed of protected varieties the buyer agrees to abide by the laws, practices and operation of the directives and acts and to allow BSPB (British Society of Plant Breeders) - acting on behalf of the Rights holder- full access to all relevant documentation. The buyer should hold or should obtain a licence from BSPB before using any of the seed as described above. The buyer must comply with the directions given and agree to make any and all payments required.

**ACCEPTANCE OF TERMS** - The giving or sending of an order to us constitutes an acceptance of the Terms by the Buyer who if they do not accept the Terms, must return the goods forthwith.

- Payment can be made by cheque, credit card and debit card.
- Delivery will be charged at cost on small orders.

In the event of shortages, we reserve the right to use alternate varieties within our mixtures without notice.





